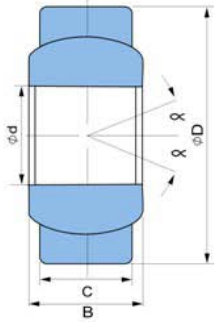




Plain type Series : **GE...E**



Bearing No.	Dimensions in mm				Basic Load Ratings N Static	Tilting Angle (°)	Wt. (Kg)
	d	D	B	C			
GE20E	20.000	35.000	16.000	12.000	130000	9	0.065
GE25E	25.000	42.000	20.000	16.000	200000	7	0.115
GE30E	30.000	47.000	22.000	18.000	275000	6	0.160
GE35E	35.000	55.000	25.000	20.000	360000	6	0.258
GE40E	40.000	62.000	28.000	22.000	440000	7	0.315
GE45E	45.000	68.000	32.000	25.000	550000	7	0.413
GE50E	50.000	75.000	35.000	28.000	700000	6	0.560
GE60E	60.000	90.000	44.000	36.000	1150000	6	1.100
GE70E	70.000	105.000	49.000	40.000	1400000	6	1.540
GE80E	80.000	120.000	55.000	45.000	1750000	6	2.156
GE90E	90.000	130.000	60.000	50.000	2100000	5	3.018

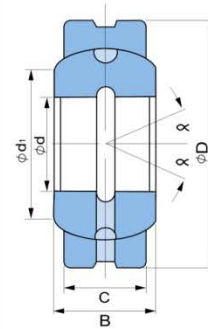
Spherical Bearings

SP

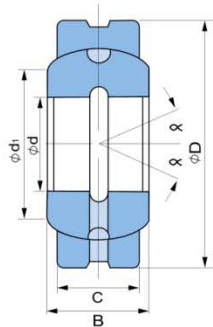
Plain type Series : GE...ES



Bearing No.		Dimensions in mm				d ₁	Basic Load Ratings		Tilting Angle (°)	Wt. (Kg)
		d	D	B	C		N			
							Dynamic	Static		
GE4E		4	12	5	3	6	2000	10000	16	0.0033
GE5E		5	14	6	4	7	3400	17000	13	0.0040
GE6E		6	14	6	4	8	3400	17000	13	0.0042
GE8E		8	16	8	5	10	5500	27000	15	0.0075
GE10E		10	19	9	6	13	8100	40000	12	0.0110
GE12E		12	22	10	7	15	10000	54000	10	0.0150
GE15ES	GE15ES-2RS	15	26	12	9	18	17000	85000	8	0.0270
GE17ES	GE17ES-2RS	17	30	14	10	20	21000	106000	10	0.0410
GE20ES	GE20ES-2RS	20	35	16	12	24	30000	146000	9	0.0660
GE25ES	GE25ES-2RS	25	42	20	16	29	48000	240000	7	0.1190
GE30ES	GE30ES-2RS	30	47	22	18	34	62000	310000	6	0.1530
GE35ES	GE35ES-2RS	35	55	25	20	39	80000	400000	6	0.2330
GE40ES	GE40ES-2RS	40	62	28	22	45	100000	500000	7	0.3060
GE45ES	GE45ES-2RS	45	68	32	25	50	127000	640000	7	0.4270
GE50ES	GE50ES-2RS	50	75	35	28	55	156000	780000	6	0.5460
GE60ES	GE60ES-2RS	60	90	44	36	66	245000	1220000	6	1.0450
GE70ES	GE70ES-2RS	70	105	49	40	77	315000	1560000	6	1.5500
GE80ES	GE80ES-2RS	80	120	55	45	88	400000	2000000	6	2.3100
GE90ES	GE90ES-2RS	90	130	60	50	98	490000	2450000	5	2.7500
GE100ES	GE100ES-2RS	100	150	70	55	109	610000	3050000	7	4.4500
GE110ES	GE110ES-2RS	110	160	70	55	120	655000	3250000	6	4.8200
GE120ES	GE120ES-2RS	120	180	85	70	130	950000	4750000	6	8.0500
GE140ES	GE140ES-2RS	140	210	90	70	150	1080000	5400000	7	11.0200
GE160ES	GE160ES-2RS	160	230	105	80	170	1370000	6800000	8	14.0100
GE180ES	GE180ES-2RS	180	260	105	80	192	1530000	7650000	6	18.6500
GE200ES	GE200ES-2RS	200	290	130	100	212	2120000	10600000	7	28.0300



***Note:**
 • For diagram of GE4E-GE12E, please refer previous page.

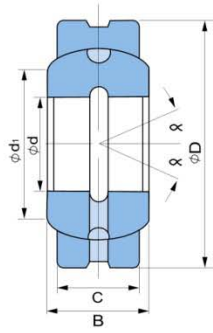


Plain type Series : GEG...ES

Bearing No.	Dimensions in mm					Basic Load Ratings		Tilting Angle (α)	Wt. (Kg)	
	d	D	B	C	d_1	N				
						Dynamic	Static			
GEG4E	4	14	7	4	7	3400	17000	20	0.0045	
GEG5E	5	16	9	5	8	5500	27000	21	0.0066	
GEG6E	6	16	9	5	9	5500	27000	21	0.0081	
GEG8E	8	19	11	6	11	8100	40000	21	0.0140	
GEG10E	10	22	12	7	13	10000	54000	18	0.0210	
GEG12E	12	26	15	9	16	17000	85000	18	0.0330	
GEG15ES	GEG15ES-2RS	15	30	16	10	19	21000	106000	16	0.0490
GEG17ES	GEG17ES-2RS	17	35	20	12	21	30000	146000	19	0.0830
GEG20ES	GEG20ES-2RS	20	42	25	16	24	48000	240000	17	0.1530
GEG25ES	GEG25ES-2RS	25	47	28	18	29	62000	310000	17	0.2030
GEG30ES	GEG30ES-2RS	30	55	32	20	34	80000	400000	17	0.3040
GEG35ES	GEG35ES-2RS	35	62	35	22	39	100000	500000	16	0.4080
GEG40ES	GEG40ES-2RS	40	68	40	25	44	127000	640000	17	0.5420
GEG45ES	GEG45ES-2RS	45	75	43	28	50	156000	780000	15	0.7130
GEG50ES	GEG50ES-2RS	50	90	56	36	57	245000	1220000	17	1.4400
GEG60ES	GEG60ES-2RS	60	105	63	40	67	315000	1560000	17	1.6000
GEG70ES	GEG70ES-2RS	70	120	70	45	77	400000	2000000	16	3.0100
GEG80ES	GEG80ES-2RS	80	130	75	50	87	490000	2450000	14	3.6400
GEG90ES	GEG90ES-2RS	90	150	85	55	98	610000	3050000	15	5.2200
GEG100ES	GEG100ES-2RS	100	160	85	55	110	655000	3250000	14	6.0500
GEG110ES	GEG110ES-2RS	110	180	100	70	122	950000	4750000	12	9.6800
GEG120ES	GEG120ES-2RS	120	210	115	70	132	1080000	5400000	16	14.7200
GEG140ES	GEG140ES-2RS	140	230	130	80	151	1370000	6800000	16	19.0100
GEG160ES	GEG160ES-2RS	160	260	135	80	176	1530000	7650000	16	20.0200
GEG180ES	GEG180ES-2RS	180	290	155	100	196	2120000	10600000	14	32.2100
GEG200ES	GEG200ES-2RS	200	320	165	100	220	2320000	11600000	15	45.2800

Spherical Bearings

SP

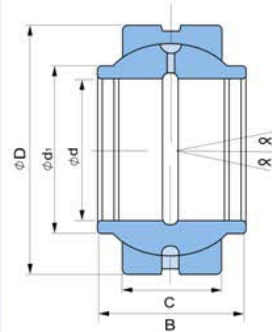


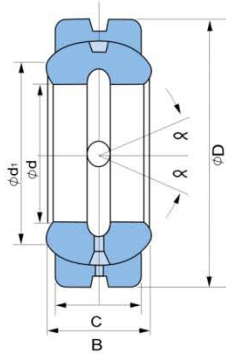
Plain type Series : **GEG...ES**

Bearing No.		Dimensions in mm				d ₁	Basic Load Ratings		Tilting Angle (α)	Wt. (Kg)
		d	D	B	C		N			
							Dynamic	Static		
GEG4E		4	14	7	4	7	3400	17000	20	0.0045
GEG5E		5	16	9	5	8	5500	27000	21	0.0066
GEG6E		6	16	9	5	9	5500	27000	21	0.0081
GEG8E		8	19	11	6	11	8100	40000	21	0.0140
GEG10E		10	22	12	7	13	10000	54000	18	0.0210
GEG12E		12	26	15	9	16	17000	85000	18	0.0330
GEG15ES	GEG15ES-2RS	15	30	16	10	19	21000	106000	16	0.0490
GEG17ES	GEG17ES-2RS	17	35	20	12	21	30000	146000	19	0.0830
GEG20ES	GEG20ES-2RS	20	42	25	16	24	48000	240000	17	0.1530
GEG25ES	GEG25ES-2RS	25	47	28	18	29	62000	310000	17	0.2030
GEG30ES	GEG30ES-2RS	30	55	32	20	34	80000	400000	17	0.3040
GEG35ES	GEG35ES-2RS	35	62	35	22	39	100000	500000	16	0.4080
GEG40ES	GEG40ES-2RS	40	68	40	25	44	127000	640000	17	0.5420
GEG45ES	GEG45ES-2RS	45	75	43	28	50	156000	780000	15	0.7130
GEG50ES	GEG50ES-2RS	50	90	56	36	57	245000	1220000	17	1.4400
GEG60ES	GEG60ES-2RS	60	105	63	40	67	315000	1560000	17	1.6000
GEG70ES	GEG70ES-2RS	70	120	70	45	77	400000	2000000	16	3.0100
GEG80ES	GEG80ES-2RS	80	130	75	50	87	490000	2450000	14	3.6400
GEG90ES	GEG90ES-2RS	90	150	85	55	98	610000	3050000	15	5.2200
GEG100ES	GEG100ES-2RS	100	160	85	55	110	655000	3250000	14	6.0500
GEG110ES	GEG110ES-2RS	110	180	100	70	122	950000	4750000	12	9.6800
GEG120ES	GEG120ES-2RS	120	210	115	70	132	1080000	5400000	16	14.7200
GEG140ES	GEG140ES-2RS	140	230	130	80	151	1370000	6800000	16	19.0100
GEG160ES	GEG160ES-2RS	160	260	135	80	176	1530000	7650000	16	20.0200
GEG180ES	GEG180ES-2RS	180	290	155	100	196	2120000	10600000	14	32.2100
GEG200ES	GEG200ES-2RS	200	320	165	100	220	2320000	11600000	15	45.2800

Bearing No.		Dimensions in mm				d _i	Basic Load Ratings		Tilting Angle (°)	Wt. (Kg)
		d	D	B	C		N			
GEEW12ES	GEEW12ES-2RS	12	22	12	7	15.5	10000	54000	4	0.022
GEEW15ES	GEEW15ES-2RS	15	26	15	9	18.5	17000	85000	5	0.030
GEEW16ES	GEEW16ES-2RS	16	28	16	9	20.0	17000	85000	4	0.035
GEEW17ES	GEEW17ES-2RS	17	30	17	10	21.0	21000	106000	7	0.044
GEEW20ES	GEEW20ES-2RS	20	35	20	12	25.0	30000	146000	4	0.071
GEEW25ES	GEEW25ES-2RS	25	42	25	16	30.5	48000	240000	4	0.131
GEEW30ES	GEEW30ES-2RS	30	47	30	18	34.0	62000	310000	4	0.168
GEEW32ES	GEEW32ES-2RS	32	52	32	18	37.0	62000	310000	4	0.182
GEEW35ES	GEEW35ES-2RS	35	55	35	20	40.0	80000	400000	4	0.253
GEEW40ES	GEEW40ES-2RS	40	62	40	22	46.0	100000	500000	4	0.338
GEEW45ES	GEEW45ES-2RS	45	68	45	25	52.0	127000	640000	4	0.481
GEEW50ES	GEEW50ES-2RS	50	75	50	28	57.0	156000	780000	4	0.558
GEEW60ES	GEEW60ES-2RS	60	90	60	36	68.0	245000	1220000	3	1.150
GEEW63ES	GEEW63ES-2RS	63	95	63	36	71.5	245000	1220000	4	1.230
GEEW70ES	GEEW70ES-2RS	70	105	70	40	78.0	315000	1560000	4	1.710
GEEW80ES	GEEW80ES-2RS	80	120	80	45	91.0	400000	2000000	4	2.390
GEEW100ES	GEEW100ES-2RS	100	150	100	55	113.0	610000	3050000	4	4.800
GEEW125ES	GEEW125ES-2RS	125	180	125	70	138.0	950000	4750000	4	8.500

KG®





Plain type Series : GEZ...ES

Bearing No.		Dimensions in mm				d ₁	Basic Load Ratings		Tilting Angle (α)	Wt. (Kg)
		d	D	B	C		N			
							Dynamic	Static		
GEZ12ES		12.700	22.225	11.100	9.525	14.1	13700	41500	6	0.022
GEZ15ES		15.875	26.988	13.894	11.913	18.3	22000	65500	6	0.036
GEZ19ES		19.050	31.750	16.662	14.275	21.8	31500	95000	6	0.053
GEZ22ES		22.225	36.513	19.431	16.662	25.4	42500	127000	6	0.085
GEZ25ES	GEZ25ES-2RS	25.400	41.275	22.225	19.050	27.6	56000	166000	6	0.121
GEZ31ES	GEZ31ES-2RS	31.750	50.800	27.762	23.800	36.0	86500	260000	6	0.232
GEZ34ES	GEZ34ES-2RS	34.925	55.563	30.150	26.187	38.6	102000	310000	6	0.351
GEZ38ES	GEZ38ES-2RS	38.100	61.913	33.325	28.575	41.2	125000	375000	6	0.422
GEZ44ES	GEZ44ES-2RS	44.450	71.438	38.887	33.325	50.7	170000	510000	6	0.641
GEZ50ES	GEZ50ES-2RS	50.800	80.963	44.450	38.100	57.9	224000	670000	6	0.932
GEZ57ES	GEZ57ES-2RS	57.150	90.488	50.013	42.850	64.9	280000	850000	6	1.330
GEZ63ES	GEZ63ES-2RS	63.500	100.013	55.550	47.625	73.3	355000	1060000	6	1.850
GEZ69ES	GEZ69ES-2RS	69.850	111.125	61.112	52.375	79.1	415000	1250000	6	2.420
GEZ76ES	GEZ76ES-2RS	76.200	120.650	66.675	57.150	86.8	500000	1500000	6	3.100
GEZ82ES	GEZ82ES-2RS	82.550	130.175	72.238	61.900	94.5	585000	1760000	6	3.820
GEZ88ES	GEZ88ES-2RS	88.900	139.700	77.775	66.675	101.6	680000	2040000	6	4.790
GEZ95ES	GEZ95ES-2RS	95.250	149.225	83.337	71.425	108.7	780000	2360000	6	5.780
GEZ101ES	GEZ101ES-2RS	101.600	158.750	88.900	76.200	115.8	900000	2650000	6	6.990
GEZ107ES	GEZ107ES-2RS	107.950	168.275	94.463	80.950	122.8	1000000	3000000	6	8.410
GEZ114ES	GEZ114ES-2RS	114.300	177.800	100.013	85.725	130.6	1120000	3400000	6	9.790
GEZ120ES	GEZ120ES-2RS	120.650	187.325	105.562	90.475	137.6	1250000	3750000	6	11.500
GEZ127ES	GEZ127ES-2RS	127.000	196.850	111.125	95.250	145.3	1400000	4150000	6	13.500
GEZ152ES	GEZ152ES-2RS	152.400	222.250	120.650	104.775	168.2	1730000	5200000	6	17.500

Bearing No.	Dimensions in mm				d _i	Basic Load Ratings		Tilting Angle (°)	Wt. (Kg)
	d	D	B	C		Dynamic	Static		
GEG30ET-2RS	30	55	32	20	34	110000	220000	17	0.30
GEG35ET-2RS	35	62	35	22	39	140000	280000	17	0.35
GEG40ET-2RS	40	68	40	25	44	180000	350000	15	0.50
GEG45ET-2RS	45	75	43	28	50	220000	430000	15	0.60
GEG50ET-2RS	50	90	56	36	57	340000	680000	15	1.40
GEG60ET-2RS	60	105	63	40	67	430000	850000	15	2.00
GEG70ET-2RS	70	120	70	45	77	550000	1100000	16	2.80
GEG80ET-2RS	80	130	75	50	87	680000	1350000	14	3.40
GEG90ET-2RS	90	150	85	55	98	850000	1700000	15	5.00
GEG100ET-2RS	100	160	85	55	110	900000	1800000	14	5.50
GEG110ET-2RS	110	180	100	70	122	1300000	2700000	12	9.00
GEG120ET-2RS	120	210	115	70	132	1500000	3000000	15	14.50
GEG140ET-2RS	140	230	130	80	151	1900000	3500000	15	18.20

